

# Bight '13 San Diego Bay Debris Study & Bight '18 Regional Trash Study

## Bight Trash Studies

2014 - 2015  
2019 - 2020

**Structural BMP &  
Institutional Control  
Implementation**

2017 - 2030

**Performance  
Evaluation**

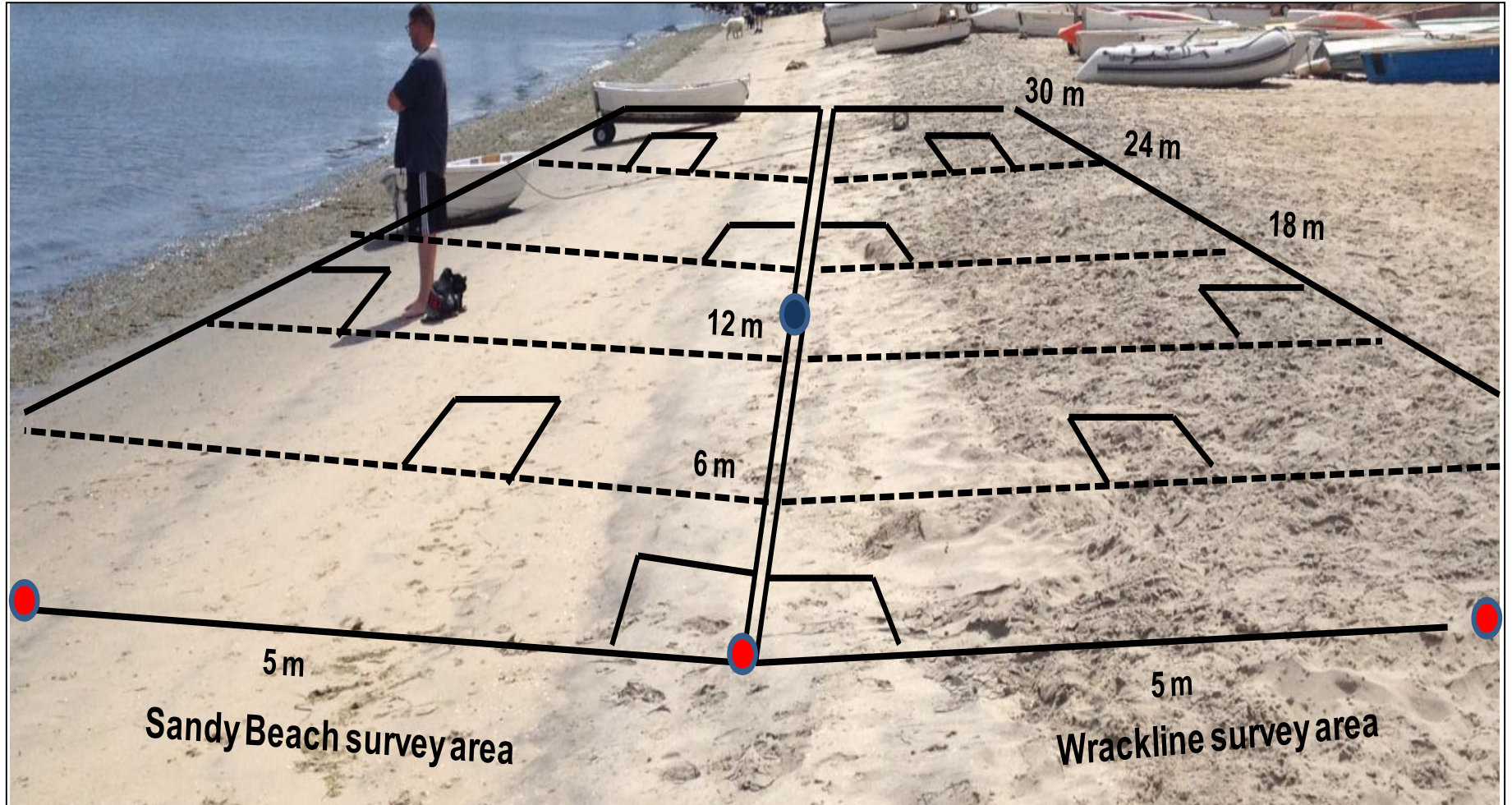
# Advantages of Bight

- 1) Comparable, compatible data across ecosystem type, location & time
  - ▶ *Methods incorporated standard methods from:*
    - ▶ (Riverine) SWAMP Rapid Trash Assessment
    - ▶ (Shoreline) NOAA Marine Debris Program
    - ▶ (Marina) Automated trash skimmers
    - ▶ (Open Water) So Cal Bight Program Trawls
  - ▶ *Adapted for varied strata, but data remains comparable*
- 2) Conducive to citizen science efforts
- 3) Inform local management priorities and actions
- 4) Leverage resources
- 5) Third party review & Quality control

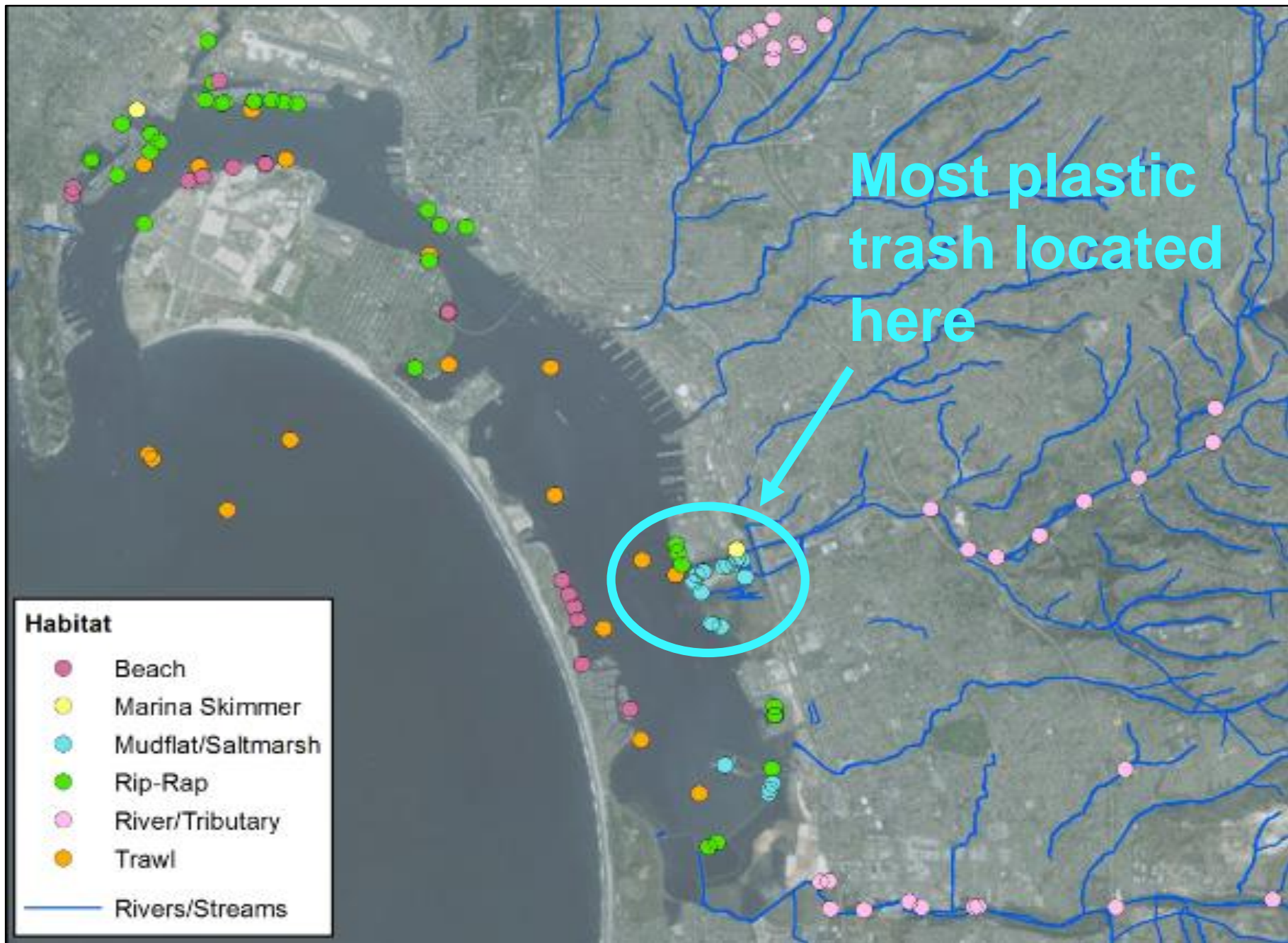
# Bight '13 – San Diego Bay Debris Study

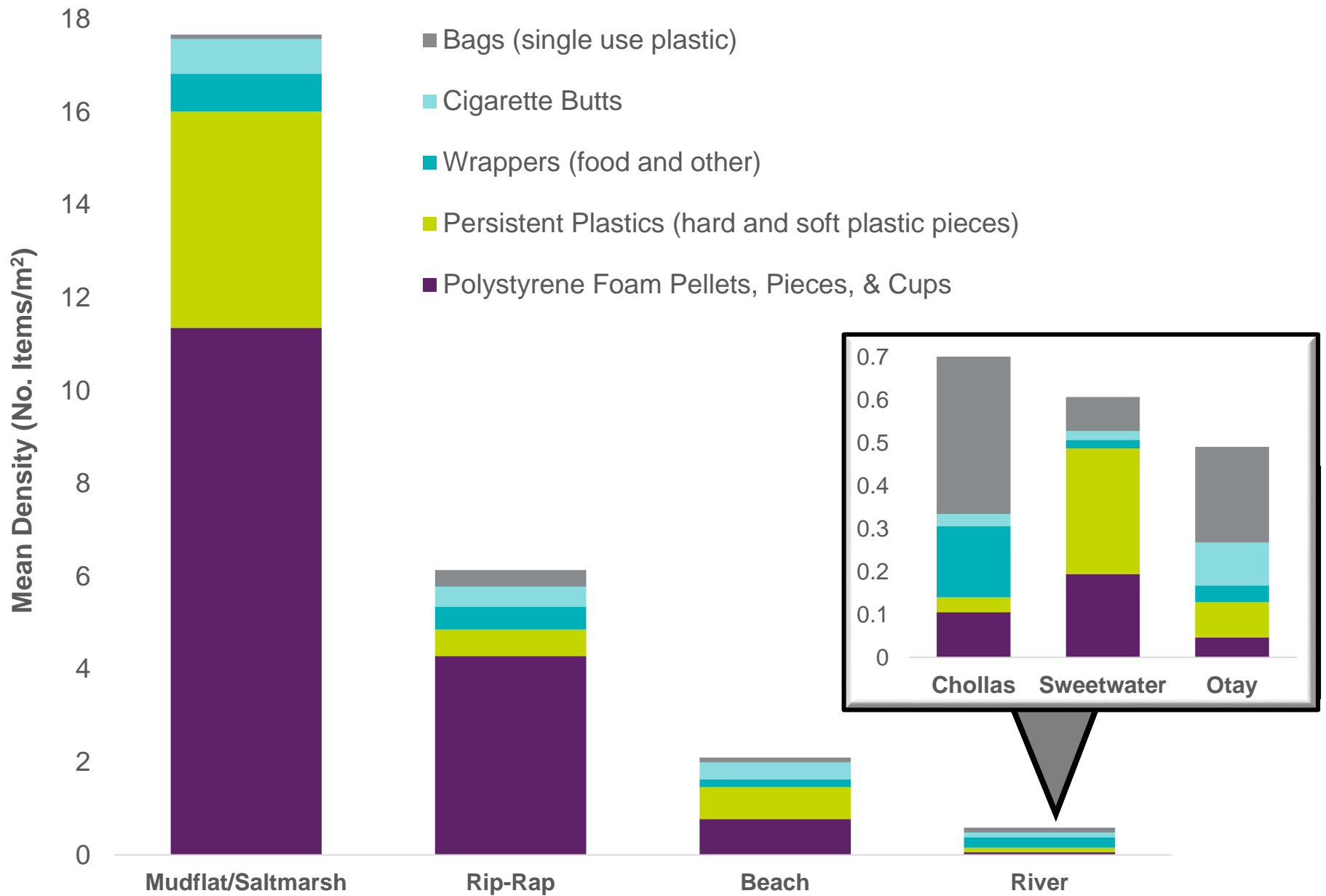


# Methods









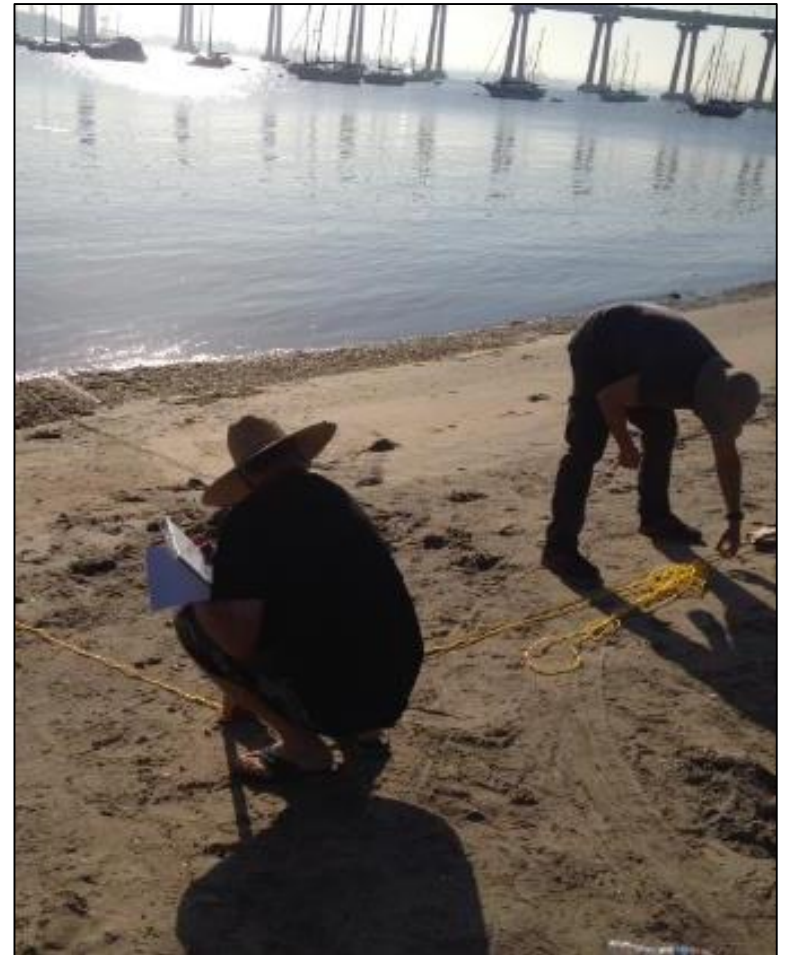
# Bight '18 - Regional Trash Study





# Bight '18 – Objectives

- 1) Solidify baseline conditions and provide regional baseline data
- 2) Shoreline habitats and estuaries
- 3) Simplify methods
  - ▶ Overall conditions
  - ▶ ID debris types and abundance
- 4) Expected effort:
  - ▶ Coordination
  - ▶ Survey teams
  - ▶ Quality assurance (field and data)
  - ▶ Analysis and reporting





# Next Steps

- Study scope & design
- Participation from copermittees
- Proposal for Study Workplan – end of March

## **Contact Information**

Terra Miller-Cassman

Amec Foster Wheeler, Environment and Infrastructure

9177 Sky Park Court, San Diego CA, 92672

(858) 514-7753

[terra.millercassman@amecfw.com](mailto:terra.millercassman@amecfw.com)