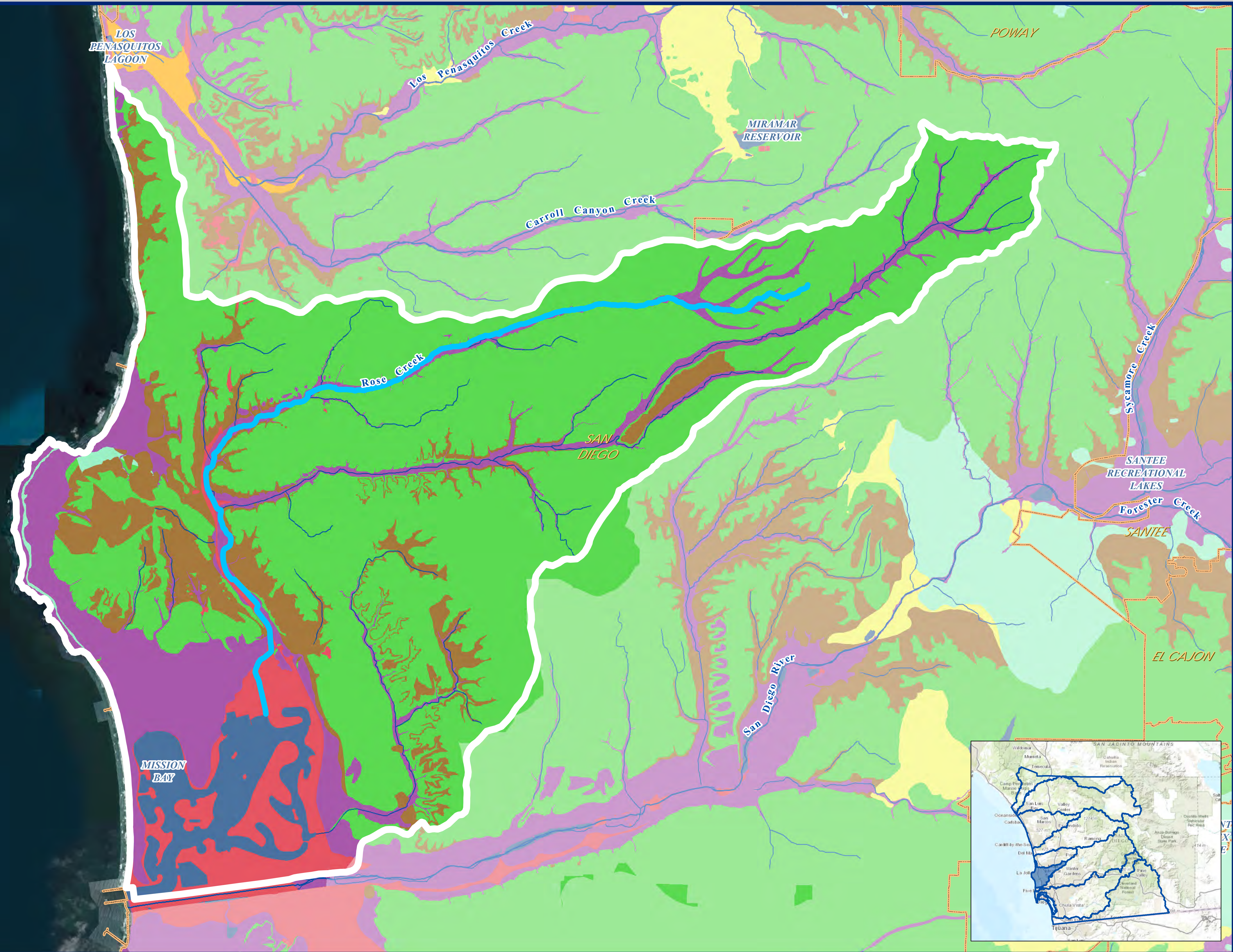


Legend

- Regional WMAA Streams
- Watershed Boundaries
- Municipal Boundaries
- Rivers & Streams

Geologic Group

- Coarse Bedrock
- Coarse Sedimentary Impermeable
- Coarse Sedimentary Permeable
- Fine Bedrock
- Fine Sedimentary Impermeable
- Fine Sedimentary Permeable
- Other



Geologic Group

Mission Bay/La Jolla Watershed - HU 906.00, 68 mi²

Exhibit Date: Sept. 8, 2014

Geosyntec consultants

RICK ENGINEERING COMPANY

Aerial Imagery Source: DigitalGlobe, 09/2012