

Appendix A

MS4 Outfalls



## Outfall Mapping by Hydrologic Area

In assessing potential MS4 sources of pollutants and/or stressors to MS4 discharges and receiving waters, the Responsible Agencies identified major MS4 outfalls and 303d listed waterbodies. Major MS4 outfalls are defined as 36" or greater in diameter (or equivalent hydraulic capacity) and discharges directly to a receiving water body. The following maps identify locations of the major MS4 outfalls by each of the hydrologic areas within the Carlsbad Watershed Management Area.

Figure A-1: Loma Alta Creek HA – Major Outfall Information

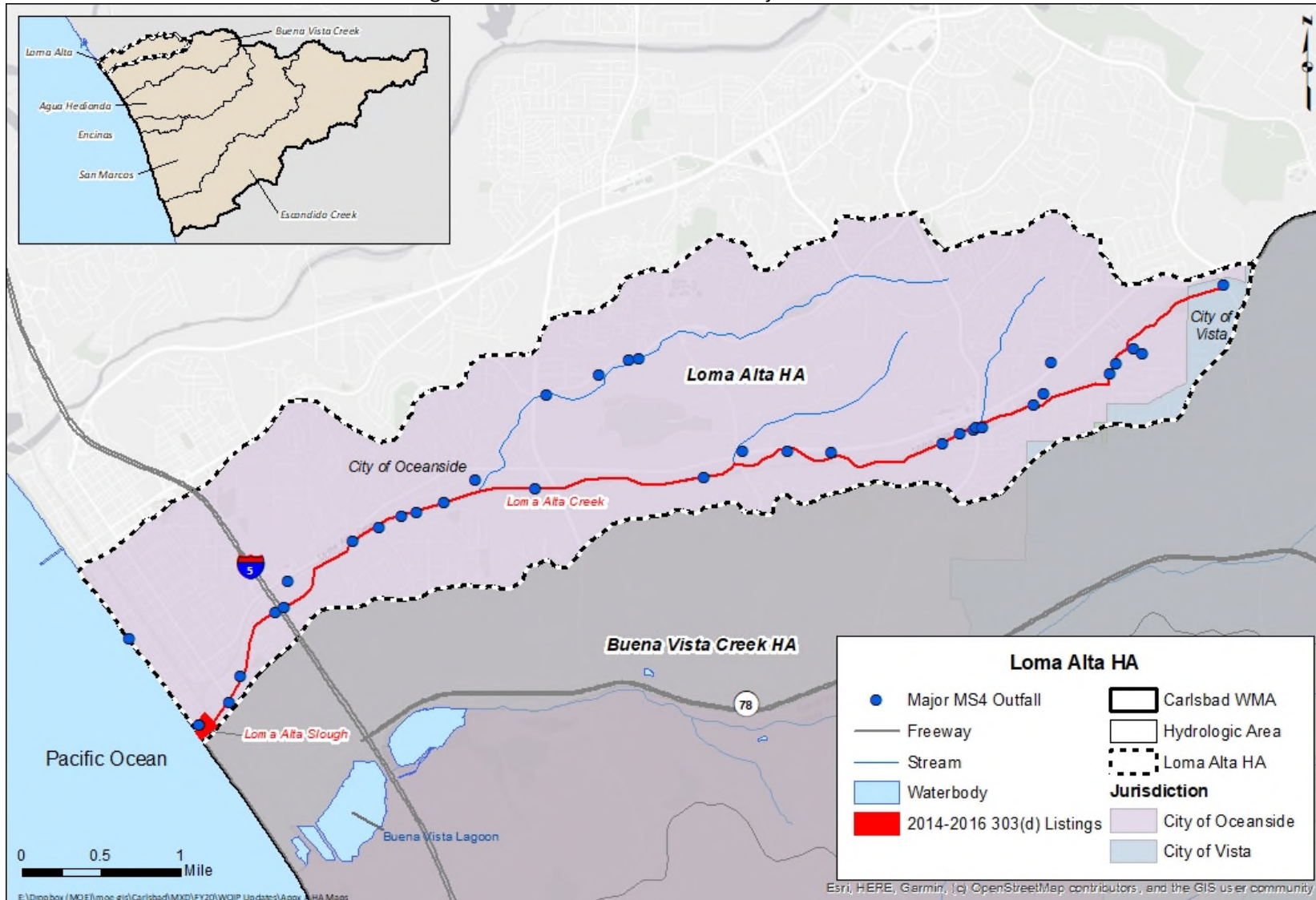


Figure A-2: Buena Vista Creek HA – Major Outfall Information

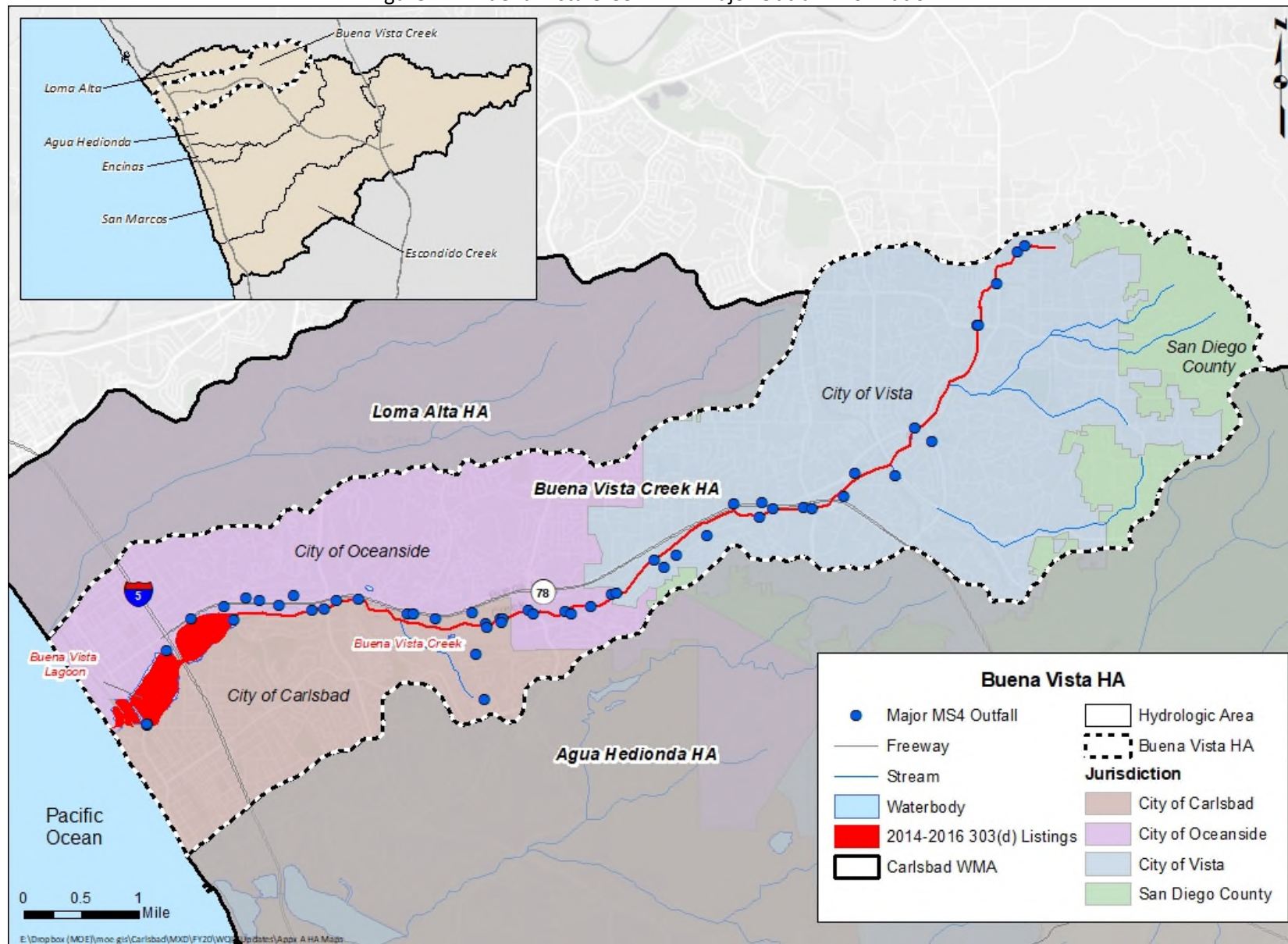


Figure A-3: Agua Hedionda HA – Major Outfall Information

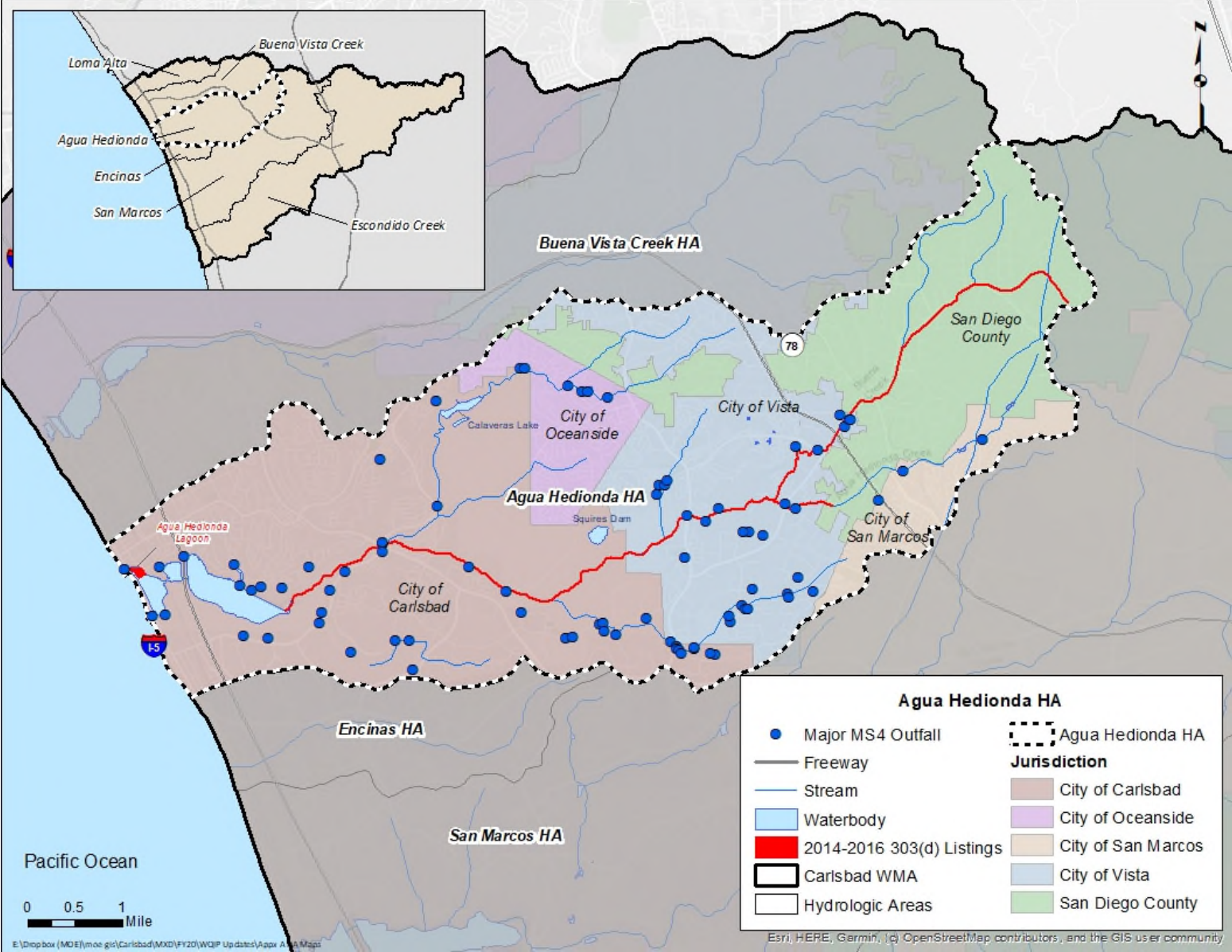


Figure A-4: Encinas HA – MS4 Outfall Information

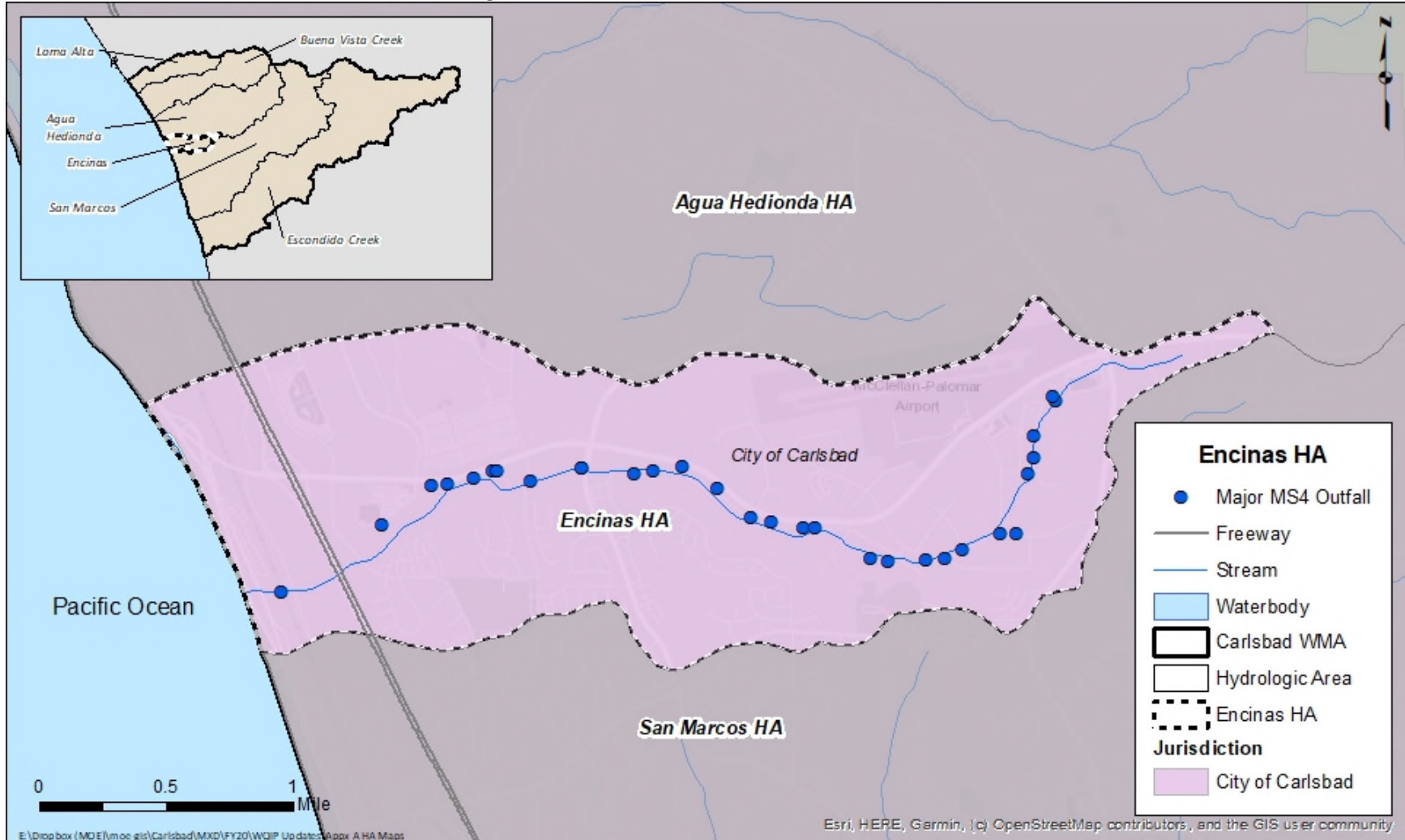


Figure A-5: San Marcos HA – MS4 Outfall Information

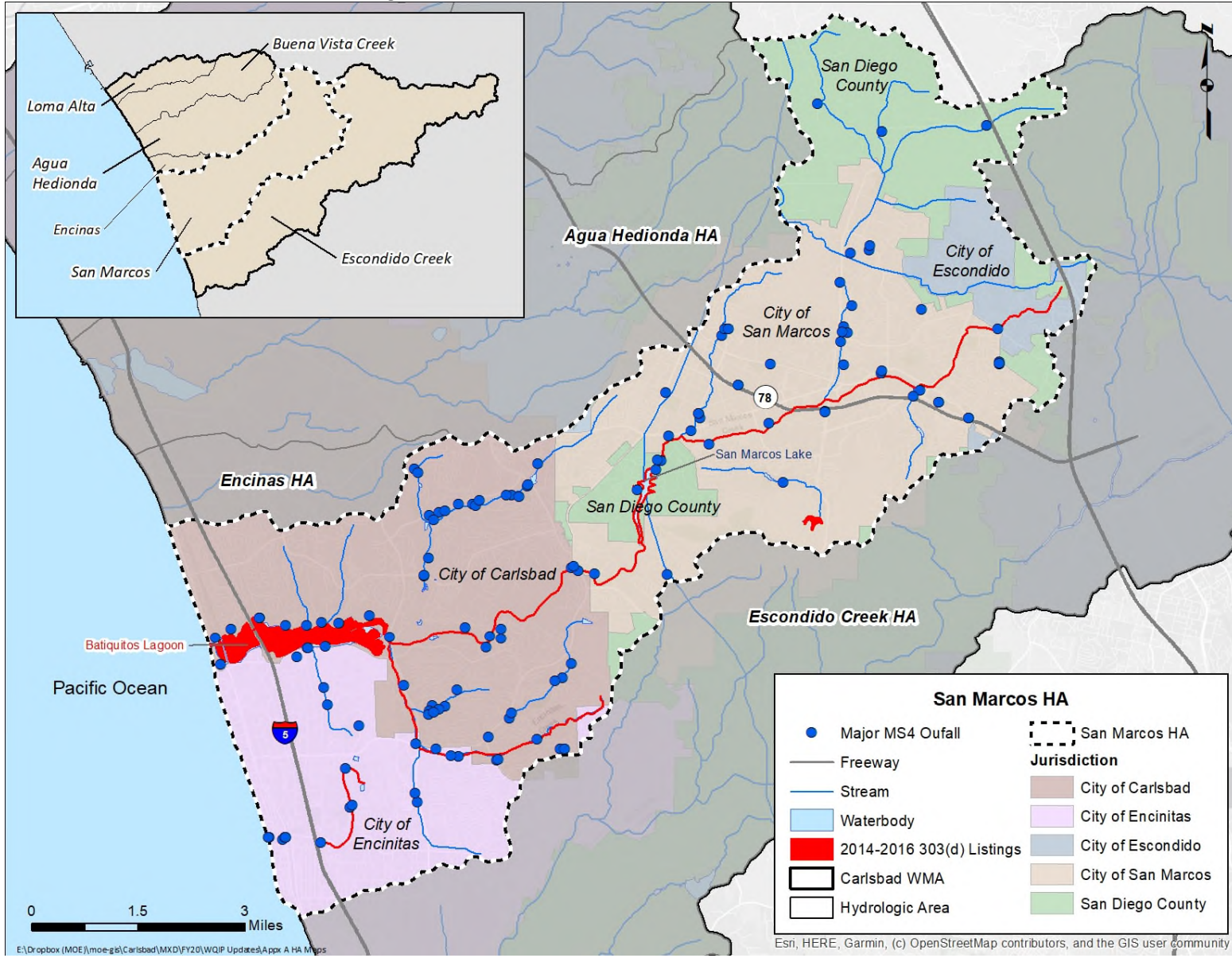




Figure A-6: Escondido Creek HA – MS4 Outfall Information

