

## **REGIONAL MONITORING WORKGROUP – MEETING SUMMARY**

County of San Diego  
5201 Ruffin Road, Suite P  
San Diego, CA 92123  
Tuesday, March 24, 2009  
10:00am – 12:00pm

Attendees:

| <b>Name</b>       | <b>Organization</b>           |
|-------------------|-------------------------------|
| Jo Ann Weber      | County of San Diego           |
| John Griffith     | SCCWRP                        |
| David Renfrew     | Weston Solutions              |
| Shelley Anghera   | Weston Solutions              |
| Annie Hill        | SDCRAA                        |
| Karen Holman      | Port of San Diego             |
| Phil Gibbons      | Port of San Diego             |
| Todd Snyder       | County of San Diego           |
| Scott Norris      | County of San Diego           |
| James Wood        | City of Carlsbad              |
| Jeff Higbee       | City of Carlsbad              |
| Marisa Fontanoz   | City of Chula Vista           |
| Pavitra Rammohan  | City of Del Mar (PBS&J)       |
| Bob Griswold      | City of El Cajon              |
| Mayela Padilla    | City of Encinitas             |
| Chris Helmer      | City of Imperial Beach        |
| Shauna McKellar   | City of National City (D-MAX) |
| Alison Witheridge | City of Oceanside             |
| Roger Morrison    | City of Poway                 |
| Andre Sonksen     | City of San Diego             |
| Erica Ryan        | City of San Marcos            |
| Helen Perry       | City of Santee                |
| Doug Coppi        | City of Vista                 |

### **REGIONAL MONITORING**

Weston provided the group with the following updates on monitoring activities:

#### **Regional Monitoring**

- Weston is in the process of generating data tables for the MLSs
- MS4 Monitoring – Random wet portion
  - 4 events completed – need 2 more events
- SMC Bioassessment – RWQCB will monitor 8 sites and we (Copermittees) will sample 16 sites (some long-term sites and some new) in San Diego County. Weston provided a group with a map of the locations (see attached: Circle – Copermittees, Square – Regional Board, Triangle – local watershed program, Red – urban, Green – open space, Orange - agriculture). Sites will be monitored for chemistry and toxicity. Monitoring will start in in May or June 2009. Periphyton sampling will be performed and the EPA is paying the cost. A regional IBI score will be determined from this data.

### **WORKPLANS**

#### **SOURCE ID MONITORING WORKPLAN 08-09**

The Source ID Monitoring Workplan for 08-09 was submitted to the Regional Board on 03/16/09. JW will follow-up with the Regional Board. The Regional Board has 30 days to comment and if no comments, the plan will be implemented.

#### **MS4 TARGETED WET WEATHER WORKPLAN**

A workplan for FY 09-10 is due on September 1, 2009, with implementation beginning next year (Year 3). Weston is in the process of preparing a workplan. The group discussed the possibility of using this data to aid in designing future Source ID studies. JW will ask the WURMP Workgroups for recommendation for MS4 sample locations.

#### **SOURCE ID MONITORING WORKPLAN 09-10**

A Source ID Monitoring Workplan for FY 09-10 is due September 1, 2009 with the Scope of Work. Once the Coeprmittees have approved a Regional Budget for 2008-2009, the Workgroup will begin developing a plan.

#### **ABLM WORKPLAN**

Weston has been tasked with preparing a workplan for the Ambient Bay and Lagoon Monitoring (ABLM) Program that is due on September 1, 2009. Information gained from the Bight 08 studies, including the data comparison with Sediment Quality Objectives, will give better insight as how to proceed with the ABLM Program.

#### **COASTAL STORM DRAIN MONITORING WORKGROUP**

This group may be tasked with helping SCCWRP to come up with coastal storm drain locations for the Bight 08 bacteria regrowth in storm drains study. See notes below.

#### **DRY WEATHER MONITORING WORKGROUP**

The next DWM Workgroup meets on 04/22/09. The group is currently looking at the Threat to Human Health and Threat to Aquatic Life categories on the Trash Monitoring Form. In addition, the group has tasked a consultant to review the action levels for bacteria, with the possibility of revising the action levels.

#### **SMARTIMER EDGESCAPE EVALUATION PROJECT (SEEP) PRESENTATION**

ER from the City of San Marcos presented study results from the SEEP report, which looked at landscape BMPs such as irrigation controls and low-impact landscape improvements in both residential and non-residential land uses in Orange County. The results of the study have been presented in a paper entitled "SEEP: Final Report" dated 10/01/08. A copy of the presentation is attached.

#### **REGIONAL MONITORING WORKGROUP PRIORITIES UPDATE**

The group discussed the priority list of issues that the workgroup intends to re-evaluate every year to determine what should be the focus of efforts for the group. The group discussed items 1-5. The updated list is attached.

#### **SCCWRP MICROBIOLOGY PRESENTATION**

Dr. John Griffith from Southern California Coastal Water Research Project (SCCWRP) provided the workgroup with a presentation regarding potential bacteria regrowth studies in the San Diego region. He requested input from the group regarding potential coastal storm drain sites for the studies. The plan is to place coupons inside storm drains and test them for enterococcus at regular intervals. Enterococcus will be enumerated upstream of the coupons, in the beach water where the storm drains discharge, and the beach sand where the storm drains discharge. After discussion it was determined that the Coastal Storm Drain Monitoring Workgroup would be best suited to provide him with guidance. Basic criteria for selected storm drains include: 1) the drain must have flow; 2) the storm drain must lead to the beach and it in the ideal situation discharge to the ocean, 3) there should be a history of bacteria exceedances during flow; and 4) confined space entry limitations should be taken into consideration.

## **FUTURE MEETINGS**

The next Regional Monitoring Workgroup meeting is scheduled for **Tuesday**, April 28, 10am-12pm - County of San Diego, 5201 Ruffin Road, Suite P, San Diego, 92123.

Upcoming meetings are as follows:

Tuesday, May 19, 10am – 12pm (Copermittees' Only Meeting)

Tuesday, June 16, 10am –12pm

## **AGENDA**

### **San Diego Regional Monitoring Workgroup**

County of San Diego, 5201 Ruffin Rd, Ste. P, San Diego, CA 92123

**Tuesday, March 24, 2009**

**10:00 AM – 12:00 PM**

1. Introductions (10 to 10:05 am)
2. Approve meeting notes from February 24, 2009 Copermittees-only meeting
3. Regional Monitoring Activities Update (10:05 to 10:10)
  - Regional Monitoring Activities Update
  - Update on Source ID Monitoring Work Plan for 2008-2009 (submitted to the RWQCB on March 16, 2009);
  - Targeted Wet Weather MS4 Monitoring and Source ID Monitoring Work Plan for 2009-2010;
  - Work Plan for ABLM Program for 2009-2010
4. Coastal Storm Drain Workgroup Update (10:10 to 10:15)
5. Dry Weather Workgroup Update (10:15 to 10:20)
6. Summary of Results from the Prop 40 SEEP Report- Urban Runoff Studies – Erica Ryan (10:20 to 10:50)
7. Revisit Monitoring Workgroup Priorities set in 2008 and update (10:50 to 11:15)
8. Working Session with John Griffith of SCCWRP to develop a Microbiological Work Plan to study bacteria regrowth in storm drains (11:15 to Noon)
9. Other Items (please bring to meeting)
10. Future Meetings - The following meetings are at the County of San Diego at 5201 Ruffin Rd, Ste. P, San Diego, CA 92123

Tuesday, April 28, 10am to Noon

Tuesday, May 19, 10am to Noon (Copermittees-Only Meeting -Tentative)

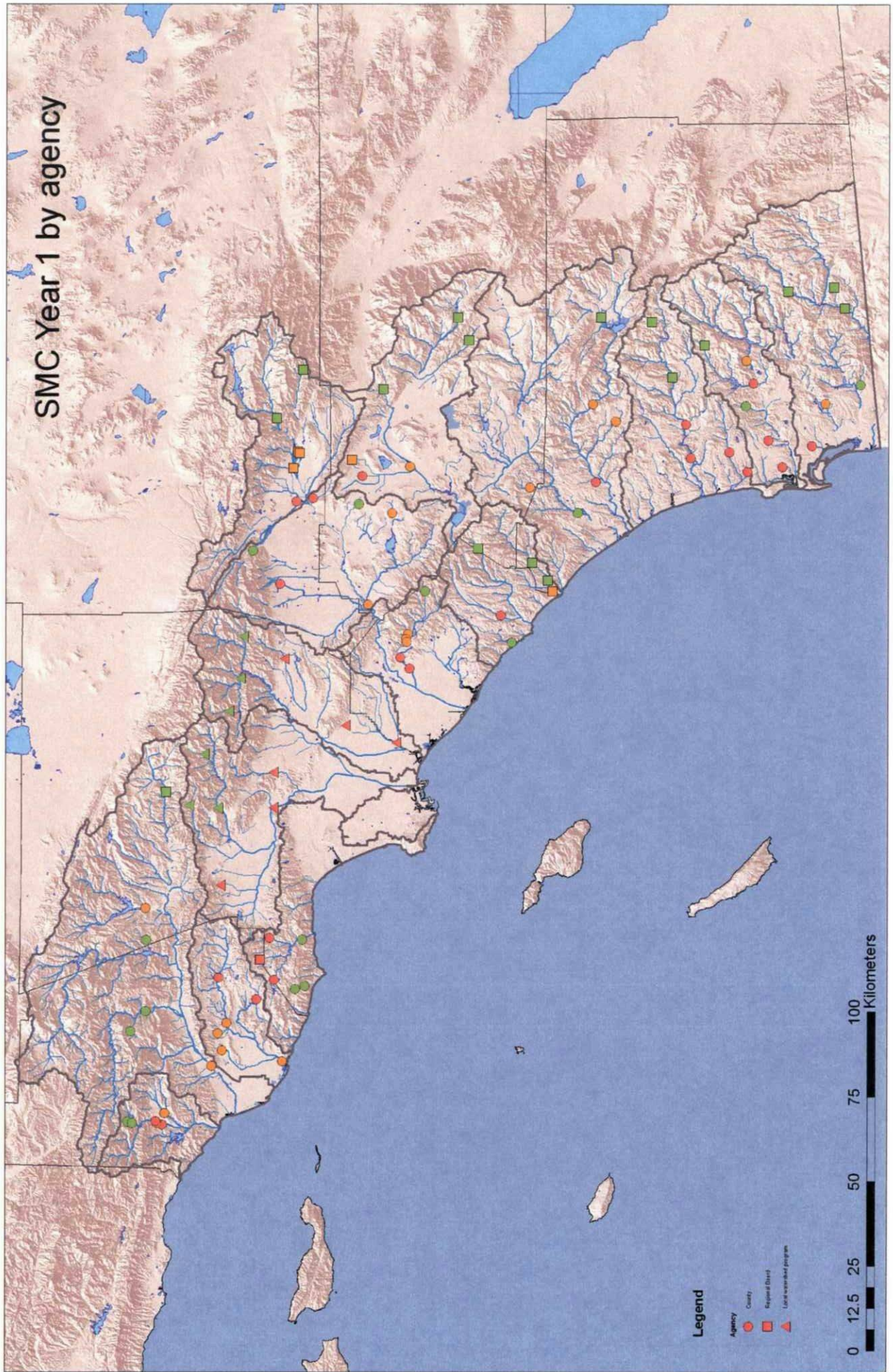
Tuesday, June 23, 10am to Noon

**For updated meeting schedule, agendas and meeting summaries visit**

**[www.projectcleanwater.org](http://www.projectcleanwater.org)**



# SMC Year 1 by agency



Regional Monitoring Workgroup Priorities Draft Update from Copermittees Input at Regional Monitoring Workgroup Meeting on March 24, 2009 ; DRAFT.

|   | <b>Priority Level</b> | <b>Issue</b>  | <b>Comment</b>  | <b>2009 Action Items</b>   |
|---|-----------------------|---|---|--|
| 1 | Primary               | Assess locations of the Temporary Watershed Assessment Stations (TWAS). Driver: Due in Sept 1, 2009 report to RWQCB.  | Each watershed should review the location of the TWAS to make sure that it will suit the watershed needs. Need to utilize the TWAS selection criteria when reviewing: land use change or major tributary; How does this fit into the entire program and does it provide useful information to WURMPs? | WURMP leads input by June 1, 2009 so that Weston will be able to place equipment in July 2009.                         |
| 2 | Primary               | How to integrate the Regional Monitoring with the WURMPs/Watersheds needs? Ongoing – no due date<br><u>2008 Update</u> – Todd Snyder of the County of San Diego, Coordinator for the WURMPs Workgroup will be a liaison. – March 25, 2008: Copermittees concurred that this was a primary issue and a challenge to be met this Permit cycle. Having Todd as a liaison has increased communication and the flow of ideas. Thanks Todd. | This is an overarching question in terms of structure and communication with the WURMPs/Watersheds. Do we have joint meetings periodically- do we focus on certain watersheds at some meetings? All ideas welcomed.   | Revisit watershed sections with Weston, WURMP representatives, Todd Snyder and Jo Ann Weber of the County of San Diego |
| 3 | Primary               | Watershed Water Quality Priority Ratings: July 1, 2007 to have changes in next Annual Report due Jan 2008 or July 1, 2008 to have changes   | Need to discuss these options and give input as to whether we would like to see these changes in the FY06-07 Regional Monitoring report or the FY07-08 Regional   | County will present timeline including ROWD activity. County will  |



Regional Monitoring Workgroup Priorities Draft Update from Copermittees Input at Regional Monitoring Workgroup Meeting on March 24, 2009 ; DRAFT.

|  | Priority Level | Issue   | Comment   | 2009 Action Items  |
|--|----------------|---|---|--|
|  |                | <p>implemented under New Permit Reporting.</p> <ul style="list-style-type: none"> <li>• Determine which system should be used:               <ul style="list-style-type: none"> <li>○ Baseline Long Term Effectiveness Assessment (BLTEA)</li> <li>○ Watershed Data Assessment Framework (June 2004)</li> <li>○ A combination of the two or some other method?</li> </ul> </li> <li>• Determine timeframe for changing watershed COC priorities (i.e. annual, every 5 years, etc.)</li> </ul> <p><u>2008 Update</u> – Weston presentation is on <a href="http://projectcleanwater.org">projectcleanwater.org</a>. WURMPs Workgroup decided LTEA every 5 years and keep the same watershed priorities for the entire Permit cycle. The watershed data assessment framework will be used annually to provide the annual evaluation required by the Permit. March 25, 2008: Copermittees decided that this is an</p> | <p>Monitoring Report</p> <p>Action Item: Weston will present BLTEA rating system and contract it to the Water Quality Framework System. TBS once prioritized at the Feb 2008 meeting.</p> <p>2009 Update: The consensus of the group was that this was a high priority item and ideally using only one system rather than two rating systems to prioritize would be ideal. The group leaned toward redirecting the 50K in the 2009-2010 budget for a Watershed Sampling Plan to addressing this issue. See Action Item 2009</p> | <p>present a draft proposal on how to proceed for the group to consider in April as a beginning point for discussion</p> |

Regional Monitoring Workgroup Priorities Draft Update from Copermittees Input at Regional Monitoring Workgroup Meeting on March 24, 2009 ; DRAFT.

|   | Priority Level | Issue  | Comment   | 2009 Action Items   |
|---|----------------|--|---|---|
|   |                | important issue, but will be revisited in February 2009, as the group already has too much to do this year with the development of new programs.   |   |   |
| 4 | Primary        | <p>How to integrate TMDL and 3<sup>rd</sup> party data – how do these get incorporated into the prioritization?</p> <p><u>2008 Update</u> – This is a work in progress. Currently there is about \$10,000 in the budget for Regional Contractor to consider 3<sup>rd</sup> party data. Looking for Copermittees guidance on how to proceed in light of Bight 08, and that we will have less data in most watersheds to present in our 2009-2010 Report. We will budget for this report in fall 2008. March 25, 2008 Update: Copermittees reached consensus that this is a primary issue. Copermittees wanted to consider allocating costs by watershed for additional review and incorporation of studies. The County will research if this can be done on the</p> | <p>From a procedural point, the Reg Mon Group will request watersheds to provide 3<sup>rd</sup> party data for their consideration to include in the Annual report in May and have a cut off date of August 1 for receipt of the data. The bigger question is how much of the TMDL info will be integrated over time in the regional report. Currently, it has not been assessed.</p> | <p>2009 Action Item: Request Copermittees to nominate data sets to be considered by May 1, 2009. The Regional Monitoring Workgroup will consider which datasets to include at the May 19 meeting. Regional contractor begins report writing in June. The Regional Harbor monitoring Program data from Oceanside Harbor, Mission Bay, and San Diego Bay was nominated for inclusion as it provides status update of quality of the</p> |



Regional Monitoring Workgroup Priorities Draft Update from Copermittees Input at Regional Monitoring Workgroup Meeting on March 24, 2009 ; DRAFT.

|   | Priority Level                            | Issue   | Comment  | 2009 Action Items   |
|---|---|---|--|---|
|   |   | Regional contract. It is likely that a separate MOA would be required by watershed. This issue will be revisited during the preparation of the budget for 2009-2010. 2009 Update – This year there is a \$30,000 budget for incorporating Third Party data.   |  | receiving waters.   |
| 5 | Primary                                   | <p>Bight 2008 planning-Begins Summer 2008</p> <p><u>2008 Update</u> – Thanks to help from the Copermittees, we are moving forward. We will continue to keep you updated. March 25, 2008: Copermittees concurred that this continues to be a primary issue for this year.</p> <p>2009 Update – Participate and Design Microbiology Pilot Study on Regrowth of bacteria in Storm Drains. The other 2 Bight Programs are already designed.</p> | The actual planning begins in Summer 2008. How do we plan to interface- Should we have a subcomm? Jo Ann Weber will need at several alternates to attend Bight meetings to make sure we are represented during the planning process. This is planned during monitoring year 2008-2009 (Year 2 of the Permit). This will also impact the data available for WURMPs. | Coastal Monitoring Workgroup Recommended 3 potential sites to SCCWRP in April 2009. |
| 6 | Tertiary-Revisit during permit reissuance | 303(d) listed analytes-should we be sampling for all 303(d) analytes? The standard analyte list is Table 2 of the new Permit.   |  | Revisit during Permit reissuance. These analytes are being measured in              |

Regional Monitoring Workgroup Priorities Draft Update from Copermittees Input at Regional Monitoring Workgroup Meeting on March 24, 2009 ; DRAFT.

|   | Priority Level | Issue  | Comment  | 2009 Action Items        |
|---|----------------|--|--|--------------------------|
|   |                | <p><u>2008 Update</u> – We did not change Table 2 of the Permit and not all 303(d)-listed analytes are included in the Regional Monitoring Program. March 25, 2008: Copermittees concurred that this is no longer an issue for this Permit cycle. Revisit this issue during permit resissuance.</p>  |  | the targeted MS4 program |
| 9 | Monitor        | <p>Data Management</p> <ul style="list-style-type: none"> <li>• Data transfer protocols</li> <li>• Develop a needs assessment</li> </ul> <p><u>2008 Update:</u> at the State level- CEDEN.org is under development; we have provided our data. Data will be available to public and will be used for future 303d listings. March 25, 2008: Copermittees concurred that this issue should continue to be monitored with the hope that ceden.org provides the appropriate database for all data.</p> <p>2009 Update: The State Water Quality Monitoring Council has been established and</p> | <p>At a minimum transfer protocols that are SWAMP compatible will be needed over the next Permit cycle. This is even more critical as various TMDL efforts begin to generate data. A larger issue is developing or tagging onto Regional databases – lots of talk at the State level, It appears that it may happen, despite funding difficulties.</p> |                          |

Regional Monitoring Workgroup Priorities Draft Update from Copermittees Input at Regional Monitoring Workgroup Meeting on March 24, 2009 ; DRAFT.

|    | Priority Level | Issue   | Comment   | 2009 Action Items |
|----|----------------|---|---|-------------------|
|    |                | will provide a port for data.   |   |                   |
| 10 | Primary        | <p>Regional Monitoring Report Outline</p> <ul style="list-style-type: none"> <li>• Review Table of Contents and update-</li> <li>• Due by July 1, 2008</li> </ul> <p><u>2008 Update</u> – A subgroup spearheaded by the San Diego Bay Group are tackling this task and will provide a draft by June 1, 2008 for review by the Regional Monitoring Workgroup. March 25, 2008: Group concurred that preparation of an updated TOC is required by Permit. 2009 Update: Completed</p> | <p>Under new Permit- additional reporting- have the opportunity to modify the current TOC. Recommend beginning this no later than Feb 2008.</p> |                   |
| 11 | Secondary      | <p>Establish/determine the linkage between TMDLs and their associated data needs and products and the regional monitoring program and its data needs and products. Search for ways the programs can be coordinated to be more efficient.</p> <p><u>2008 Update</u> – Ongoing issue. March 25, 2008: Group concurred that this will</p>  | <p>Overarching question on how we do business in light of TMDLs.</p>  |                   |

Regional Monitoring Workgroup Priorities Draft Update from Copermittees Input at Regional Monitoring Workgroup Meeting on March 24, 2009 ; DRAFT.

|    | Priority Level | Issue  | Comment   | 2009 Action Items |
|----|----------------|--|---|-------------------|
|    |                | be a challenge in this and future Permit cycles. Revisit in February 2009.   |   |                   |
| 12 | Primary        | <p>Permit Compliance – monitoring program for how the MS4 outfall monitoring and Source ID monitoring will be conducted is due on July 1, 2008.</p> <p>Some portion of the MS4 Outfall program will need to be implemented by October 1, 2008. Both programs will be fully implemented in 2008-2009 monitoring year, which is Oct 2008 through Sept 2009.</p> <p>In light of the updated Dry Weather Programs being due as part of the JURMP in Jan. 2008 and for manpower/budgeting purposes knowing the cost of these programs in Fall 2007 will help with projecting budgets for fiscal 2008, The County of San Diego will propose on Feb 27<sup>th</sup> to increase the priority of this item and have a framework of the program developed by Fall 2008.</p> | <p>Copermittees should be aware of these emerging programs. It is assumed at this time that watersheds/jurisdictions will collect and pay for analysis of these samples. Watersheds will be involved in design and selection of sample points. Each watershed is required to have a program. Ken Schiff of SCCWRP has agreed to facilitate a session on the goals, what questions we are trying to answer and possible designs of these programs. Will be scheduled based on Feb 27<sup>th</sup>, 2007 meeting results.</p> |                   |

Regional Monitoring Workgroup Priorities Draft Update from Copermittees Input at Regional Monitoring Workgroup Meeting on March 24, 2009 ; DRAFT.

|    | Priority Level | Issue   | Comment   | 2009 Action Items |
|----|----------------|---|---|-------------------|
|    |                | <p><u>2008 Update:</u><br/>           Conceptual framework completed in Sept 2007. Detailed work plan in progress. The Dry Weather Workgroup and the County will request info from Copermittees to finalize sample locations. Goal is to have a detailed draft by June 1, 2008 for review. March 25, 2008: Copermittees concurred that this item is the highest priority due to the regulatory due date of July 1, 2008.</p> <p>March 2009 Update – Task Completed – except for updates</p> |   |                   |
| 14 | Primary        | <p>County of San Diego Added this one after meeting: Status of ABLM Program – Assessment of Program included in the Regional Monitoring Report submitted on Jan 31, 2007. Due date: June 1, 2007</p> <p><u>2008 Update –</u><br/>           Copermittees continue to work with RWQCB on the ABLM Program. March 25, 2008: Copermittees concurred that this issue will need to be revisited in</p>   | <p>County of San Diego will request RWQCB to review this prior to summer 2007. This was done.</p> |                   |



Regional Monitoring Workgroup Priorities Draft Update from Copermittees Input at Regional Monitoring Workgroup Meeting on March 24, 2009 ; DRAFT.

|    | Priority Level                              | Issue   | Comment  | 2009 Action Items |
|----|---|---|--|-------------------|
|    |   | February 2009 to prepare for the 2009-2010 monitoring year. 2009 Update - Copermittees plan to use the results of the Bight 08 Lagoon work to guide the preparation of and ABLM Work Plan for 2009-2010 due to RWQCB on Sept 1, 2009  |  |                   |
| 15 |   | The dry weather group did not update the action levels due to time constraints. The group concurred that this item can be roved from the list. 2009 Update: <u>Dry Weather Workgroup is updating action levels</u>  |  |                   |
| 16 | Primary during budget process for 2009-2010 | Southern California Stormwater Monitoring Coalition -Recommend to be added in 2008 – More consistency between Permits across CA is being required by RWQCBs. The purposes are to increase consistency between Permits and allow comparable data evaluations across Permits. Additionally, consistency in Permits reduces Permit reissuance costs for RWQCB and Copermittees. As a result of this, The | To have input, we need to have representatives at the table during development of the programs. Consider increasing funding in 2009-2010 so that we can have representatives at the table. These meeting are always outside of the County. The technical committees can meet monthly and requires technical expertise. Ideally, it would be best to have a technical representative and a Copermittees representative. |                   |

Regional Monitoring Workgroup Priorities Draft Update from Copermittees Input at Regional Monitoring Workgroup Meeting on March 24, 2009 ; DRAFT.

|    | <b>Priority Level</b> | <b>Issue</b>   | <b>Comment</b> | <b>2009 Action Items</b> |
|----|-----------------------|--|----------------|--------------------------|
|    |                       | <p>Southern California Monitoring Coalition is increasingly being used as a forum to regionalize and update programs to be inserted into Permits. An example is the Regional Bioassessment Program that will be included in our Monitoring Program in the upcoming year. March 25, 2008: Copermittees concurred that additional funding for SMC may need to be considered so that we and technical experts are at the table during the development of regional programs that will become part of our Permit. Update March 2009 –</p> |                |                          |
| 17 | Primary               | <p>Recommend to be added in 2008 - This issue was discussed in Fall 2007, but due to Permit reissuance issues taking priority, not acted on. The water quality benchmarks used in the Regional Monitoring Report (Table 4 in each watershed section) may need to be updated. Consider splitting ambient and Stormwater</p>   |                |                          |

Regional Monitoring Workgroup Priorities Draft Update from Copermittees Input at Regional Monitoring Workgroup Meeting on March 24, 2009 ; DRAFT.

|    | <b>Priority Level</b> | <b>Issue</b>  | <b>Comment</b> | <b>2009 Action Items</b>  |
|----|-----------------------|---|----------------|---|
|    |                       | benchmarks into separate tables. Seek Copermittees guidance. March 25, 2008: Copermittees concurred that updating the benchmarks was important. Weston will provide a draft for Copermittees review and comment. Update March 2009- Completed. May want to revisit how nutrients are evaluated. |                |   |
| 18 | Primary               | Per Permit requirements, prepare MS4 Targeted Wet Weather Monitoring Program – Due Sept 1, 2009 to RWQCB  |                | Comments and one MS4 wet weather location per WMA due on June 15, 2009; |
| 19 | Primary               | Per Permit requirements, prepare a Source Identification Monitoring Plan for 2009-2010 – Due Sept 1, 2009 to RWQCB  |                |   |

Regional Monitoring Workgroup Priorities ~~in February 2007; 2008 Update-Draft Update from and Request for CCo~~ Committees Input at Regional Monitoring Workgroup Meeting on March 24~~5~~, 2009~~8~~ ; ~~DRAFT~~ and the results of ~~C~~ Committees Input.

|   | <b>Pri<br/>ori<br/>ty<br/>Level</b>    | <b>Issue</b>   | <b>Comment</b>   | <b><u>2009 Action<br/>Items</u></b>  |
|---|--|--|--|--|
| 1 | <u>Prima<br/>ryTert<br/>iary</u>       | <p>Assess locations of the Temporary Watershed Assessment Stations (TWAS). Driver: Due in Sept 1, 200<del>9</del>7 report to RWQCB.</p> <p><del>2008 Update-Completed- We will revisit the locations for the last 2 years of the Permit. March 25, 2008 update- Copermittees concurred with this recommendation.</del></p>   | <p>Each watershed should review the location of the TWAS to make sure that it will suit the watershed needs. Need to utilize the TWAS selection criteria when reviewing: land use change or major tributary; How does this fit into the entire program and does it provide useful information to WURMPs?</p> | <p><u>WURMP leads input by June 1, 2009 so that Weston will be able to place equipment in July 2009.</u></p>                         |
| 2 | Prima<br>ry                            | <p>How to integrate the Regional Monitoring with the WURMPs/Watersheds needs? Ongoing – no due date</p> <p><u>2008 Update</u> – Todd Snyder of the County of San Diego, Coordinator for the WURMPs Workgroup will be a liaison. – March 25, 2008: Copermittees concurred that this was a primary issue and a challenge to be met this Permit cycle. Having Todd as a liaison has increased communication and the flow of ideas. Thanks Todd.</p> | <p>This is an overarching question in terms of structure and communication with the WURMPs/Watersheds. Do we have joint meetings periodically- do we focus on certain watersheds at some meetings? All ideas welcomed.</p>   | <p><u>Revisit watershed sections with Weston, WURMP representatives, Todd Snyder and Jo Ann Weber of the County of San Diego</u></p> |
| 3 | <u>Prima<br/>rySee<br/>endar<br/>y</u> | <p>Watershed Water Quality Priority Ratings: July 1, 2007 to have changes in next Annual Report due Jan 2008 or July 1, 2008 to have changes implemented under</p>   | <p>Need to discuss these options and give input as to whether we would like to see these changes in the FY06-07 Regional Monitoring report or the</p>  | <p><u>County will present timeline including ROWD activity.</u></p>  |

|  | Priority Level | Issue   | Comment  | <u>2009 Action Items</u>  |
|--|----------------|---|--|---|
|  |                | <p>New Permit Reporting.</p> <ul style="list-style-type: none"> <li>• Determine which system should be used:               <ul style="list-style-type: none"> <li>○ Baseline Long Term Effectiveness Assessment (BLTEA)</li> <li>○ Watershed Data Assessment Framework (June 2004)</li> <li>○ A combination of the two or some other method?</li> </ul> </li> <li>• Determine timeframe for changing watershed COC priorities (i.e. annual, every 5 years, etc.)</li> </ul> <p><u>2008 Update</u> – Weston presentation is on projectcleanwater.org. WURMPs Workgroup decided LTEA every 5 years and keep the same watershed priorities for the entire Permit cycle. The watershed data assessment framework will be used annually to provide the annual evaluation required by the Permit.<br/>           March 25, 2008:<br/>           Copermittees decided that this is an important issue, but will be revisited in February 2009, as the group already has too much to do this year with the development of new</p> | <p>FY07-08 Regional Monitoring Report</p> <p>Action Item: Weston will present BLTEA rating system and contract it to the Water Quality Framework System. TBS once prioritized at the Feb 27<sup>th</sup> <u>2008</u> meeting.</p> <p><u>2009 Update: The consensus of the group was that this was a high priority item and ideally using only one system rather than two rating systems to prioritize would be ideal. The group leaned toward redirecting the 50K in the 2009-2010 budget for a Watershed Sampling Plan to addressing this issue. See Action Item 2009</u></p> | <p><u>County will present a draft proposal on how to proceed for the group to consider in April as a beginning point for discussion</u></p> |



Regional Monitoring Workgroup Priorities ~~in February 2007; 2008 Update-Draft Update from and Request for C~~Copermittees Input at Regional Monitoring Workgroup Meeting on March 24~~5~~, 2009~~8~~ ; ~~DRAFT~~~~and the results of Copermittees Input.~~

|   | <b>Pri<br/>ori<br/>ty<br/>Level</b> | <b>Issue</b>   | <b>Comment</b>  | <b><u>2009 Action<br/>Items</u></b>  |
|---|-------------------------------------|--|---|--|
|   |                                     | programs.  |   |  |
| 4 | Prima<br>ry                         | <p>How to integrate TMDL and 3<sup>rd</sup> party data – how do these get incorporated into the prioritization?</p> <p><u>2008 Update</u> – This is a work in progress. Currently there is about \$10,000 in the budget for Regional Contractor to consider 3<sup>rd</sup> party data. Looking for Copermittees guidance on how to proceed in light of Bight 08, and that we will have less data in most watersheds to present in our 2009-2010 Report. We will budget for this report in fall 2008. March 25, 2008 Update: Copermittees reached consensus that this is a primary issue. Copermittees wanted to consider allocating costs by watershed for additional review and incorporation of studies. The County will research if this can be done on the Regional contract. It is likely that a separate MOA would be required by watershed. This issue will be revisited during the preparation of the budget for 2009-2010.</p> <p><u>2009 Update – This year there is a \$30,000 budget for incorporating Third Party data.</u></p> | <p>From a procedural point, the Reg Mon Group will request watersheds to provide 3<sup>rd</sup> party data for their consideration to include in the Annual report in May and have a cut off date of August 1 for receipt of the data. The bigger question is how much of the TMDL info will be integrated over time in the regional report. Currently, it has not been assessed.</p> | <p><u>2009 Action Item: Request Copermittees to nominate data sets to be considered by May 1, 2009. The Regional Monitoring Workgroup will consider which datasets to include at the May 19 meeting. Regional contractor begins report writing in June. The Regional Harbor monitoring Program data from Oceanside Harbor, Mission Bay, and San Diego Bay was nominated for inclusion as it provides status update of quality of the receiving waters.</u></p> |

Regional Monitoring Workgroup Priorities ~~in February 2007; 2008 Update-Draft Update from and Request for CCoopermittees~~ Input at Regional Monitoring Workgroup Meeting on March 24~~5~~, 2009~~8~~ ; ~~DRAFT~~and the results of Copermittees Input.

|              | <b>Priori<br/>ty<br/>Level</b>                | <b>Issue</b>   | <b>Comment</b>  | <b><u>2009 Action<br/>Items</u></b>   |
|--------------|---|--|---|---|
| 5            | Primary                                       | <p>Bight 2008 planning- Begins Summer 2008</p> <p><u>2008 Update</u> – Thanks to help from the Copermittees, we are moving forward. We will continue to keep you updated. March 25, 2008: Copermittees concurred that this continues to be a primary issue for this year. <u>2009 Update – Participate and Design Microbiology Pilot Study on Regrowth of bacteria in Storm Drains. The other 2 Bight Programs are already designed.</u></p> | <p>The actual planning begins in Summer 2008. How do we plan to interface- Should we have a subcomm? Jo Ann Weber will need at several alternates to attend Bight meetings to make sure we are represented during the planning process. This is planned during monitoring year 2008-2009 (Year 2 of the Permit). This will also impact the data available for WURMPs.</p> | <p><u>Coastal Monitoring Workgroup Recommended 3 potential sites to SCCWRP in April 2009.</u></p>             |
| 6            | Tertiary-<br>Revisit during permit reissuance | <p>303(d) listed analytes- should we be sampling for all 303(d) analytes? The standard analyte list is Table 2 of the new Permit.</p> <p><u>2008 Update</u> – We did not change Table 2 of the Permit and not all 303(d)-listed analytes are included in the Regional Monitoring Program. March 25, 2008: Copermittees concurred that this is no longer an issue for this Permit cycle. Revisit this issue during permit reissuance.</p>     |   | <p><u>Revisit during Permit reissuance. These analytes are being measured in the targeted MS4 program</u></p> |
| <del>7</del> |   | <del>Completed—deleted</del>   |   |   |
| <del>8</del> |   | <del>Completed—deleted</del>   |   |   |
| 9            | Monitor                                       | <p>Data Management</p> <ul style="list-style-type: none"> <li>• Data transfer protocols</li> <li>• Develop a needs</li> </ul>  | <p>At a minimum transfer protocols that are SWAMP compatible will be needed over the next</p>   |   |

Regional Monitoring Workgroup Priorities ~~in February 2007; 2008 Update-Draft Update from and Request for C~~Copermittees Input at Regional Monitoring Workgroup Meeting on March 24~~5~~, 2009~~8~~ ; ~~DRAFT~~~~and the results of Copermittees Input.~~

|    | <b>Priori<br/>ty<br/>Level</b> | <b>Issue</b>   | <b>Comment</b>  | <b><u>2009 Action<br/>Items</u></b> |
|----|--------------------------------|--|---|-------------------------------------|
|    |                                | <p>assessment</p> <p><u>2008 Update:</u> at the State level- CEDEN.org is under development; we have provided our data. Data will be available to public and will be used for future 303d listings. March 25, 2008: Copermittees concurred that this issue should continue to be monitored with the hope that ceden.org provides the appropriate database for all data.</p> <p><u>2009 Update: The State Water Quality Monitoring Council has been established and will provide a port for data.</u></p> | <p>Permit cycle. This is even more critical as various TMDL efforts begin to generate data. A larger issue is developing or tagging onto Regional databases – lots of talk at the State level, It appears that it may happen, despite funding difficulties.</p> |                                     |
| 10 | Primary                        | <p>Regional Monitoring Report Outline</p> <ul style="list-style-type: none"> <li>• Review Table of Contents and update-</li> <li>• Due by July 1, 2008</li> </ul> <p><u>2008 Update</u> – A subgroup spearheaded by the San Diego Bay Group are tackling this task and will provide a draft by June 1, 2008 for review by the Regional Monitoring Workgroup. March 25, 2008: Group concurred that preparation of an updated TOC is required by Permit.</p> <p><u>2009 Update: Completed</u></p>          | <p>Under new Permit-additional reporting- have the opportunity to modify the current TOC. Recommend beginning this no later than Feb 2008.</p>  |                                     |
| 11 | Secondary                      | <p>Establish/determine the linkage between TMDLs and their associated data needs</p>   | <p>Overarching question on how we do business in light of TMDLs.</p>  |                                     |

Regional Monitoring Workgroup Priorities ~~in February 2007; 2008 Update-Draft Update from and Request for CCo~~permittees Input at Regional Monitoring Workgroup Meeting on March 24~~5~~, 2009~~8~~ ; ~~DRAFT~~and the results of CCo~~permittees~~ Input.

|    | <b>Priori<br/>ty<br/>Level</b> | <b>Issue</b>  | <b>Comment</b>  | <b><u>2009 Action<br/>Items</u></b> |
|----|--------------------------------|---|---|-------------------------------------|
|    |                                | <p>and products and the regional monitoring program and its data needs and products. Search for ways the programs can be coordinated to be more efficient.</p> <p><u>2008 Update</u> – Ongoing issue. March 25, 2008: Group concurred that this will be a challenge in this and future Permit cycles. Revisit in February 2009.</p>   |   |                                     |
| 12 | Prima<br>ry                    | <p>Permit Compliance – monitoring program for how the MS4 outfall monitoring and Source ID monitoring will be conducted is due on July 1, 2008.</p> <p>Some portion of the MS4 Outfall program will need to be implemented by October 1, 2008. Both programs will be fully implemented in 2008-2009 monitoring year, which is Oct 2008 through Sept 2009.</p> <p>In light of the updated Dry Weather Programs being due as part of the JURMP in Jan. 2008 and for manpower/budgeting purposes knowing the cost of these programs in Fall 2007 will help with projecting budgets for fiscal 2008, The County of San Diego will propose on Feb 27<sup>th</sup> to</p> | <p>Copermittees should be aware of these emerging programs. It is assumed at this time that watersheds/jurisdictions will collect and pay for analysis of these samples. Watersheds will be involved in design and selection of sample points. Each watershed is required to have a program. Ken Schiff of SCCWRP has agreed to facilitate a session on the goals, what questions we are trying to answer and possible designs of these programs. Will be scheduled based on Feb 27<sup>th</sup>, 2007 meeting results.</p> |                                     |

Regional Monitoring Workgroup Priorities ~~in February 2007; 2008 Update-Draft Update from and Request for CCoopermittees Input at Regional Monitoring Workgroup Meeting on March 24, 2008 ; DRAFT and the results of Copermittees Input.~~

|    | Priority Level                  | Issue  | Comment   | <u>2009 Action Items</u> |
|----|---------------------------------|--|---|--------------------------|
|    |                                 | <p>increase the priority of this item and have a framework of the program developed by Fall 2008.</p> <p>2008 Update: Conceptual framework completed in Sept 2007. Detailed work plan in progress. The Dry Weather Workgroup and the County will request info from Copermittees to finalize sample locations. Goal is to have a detailed draft by June 1, 2008 for review. March 25, 2008: Copermittees concurred that this item is the highest priority due to the regulatory due date of July 1, 2008.</p> <p><u>March 2009 Update – Task Completed – except for updates</u></p> |   |                          |
| 13 |                                 | <p><del>Copermittees agreed to delete this item as it is covered by Items 2 and 10.</del></p>  |   |                          |
| 14 | <p><u>Tertiary Priority</u></p> | <p>County of San Diego Added this one after meeting: Status of ABLM Program – Assessment of Program included in the Regional Monitoring Report submitted on Jan 31, 2007. Due date: June 1, 2007</p> <p>2008 Update – Copermittees continue to work with RWQCB on the ABLM Program. March 25, 2008: Copermittees concurred that this issue will need to be revisited in February 2009 to</p>   | <p>County of San Diego will request RWQCB to review this prior to summer 2007. This was done.</p> |                          |



Regional Monitoring Workgroup Priorities ~~in February 2007; 2008 Update-Draft Update from and Request for CCoopermittees Input at Regional Monitoring Workgroup Meeting on March 24, 2009 ; DRAFT and the results of Copermittees Input.~~

|    | Priorty Level                               | Issue  | Comment  | <u>2009 Action Items</u> |
|----|---|--|--|--------------------------|
|    |   | prepare for the 2009-2010 monitoring year.<br><a href="#">2009 Update - Copermittees plan to use the results of the Bight 08 Lagoon work to guide the preparation of and ABLM Work Plan for 2009-2010 due to RWQCB on Sept 1, 2009</a>   |  |                          |
| 15 |   | The dry weather group did not update the action levels due to time constraints. The group concurred that this item can be roved from the list. <a href="#">2009 Update: Dry Weather Workgroup is updating action levels</a>  |  |                          |
| 16 | Primary during budget process for 2009-2010 | <a href="#">Southern California Stormwater Monitoring Coalition</a> -Recommend to be added in 2008 – More consistency between Permits across CA is being required by RWQCBs. The purposes are to increase consistency between Permits and allow comparable data evaluations across Permits. Additionally, consistency in Permits reduces Permit reissuance costs for RWQCB and Copermittees. As a result of this, The Southern California Monitoring Coalition is increasingly being used as a forum to regionalize and update programs to be inserted into Permits. An example is the Regional Bioassessment Program that will be | To have input, we need to have representatives at the table during development of the programs. Consider increasing funding in 2009-2010 so that we can have representatives at the table. These meeting are always outside of the County. The technical committees can meet monthly and requires technical expertise. Ideally, it would be best to have a technical representative and a Copermittees representative. |                          |

Regional Monitoring Workgroup Priorities ~~in February 2007; 2008 Update-Draft Update from and Request for CCo~~permittees Input at Regional Monitoring Workgroup Meeting on March 24~~5~~, 2009~~8~~ ; ~~DRAFT~~and the results of CCo~~permittees~~ Input.

|    | <b>Pri<br/>ori<br/>ty<br/>Level</b> | <b>Issue</b>   | <b>Comment</b> | <u><b>2009 Action<br/>Items</b></u>                             |
|----|-------------------------------------|--|----------------|---|
|    |                                     | included in our Monitoring Program in the upcoming year. March 25, 2008: Copermittees concurred that additional funding for SMC may need to be considered so that we and technical experts are at the table during the development of regional programs that will become part of our Permit. <u>Update March 2009 –</u>  |                |   |
| 17 | Prima<br>ry                         | Recommend to be added in 2008 - This issue was discussed in Fall 2007, but due to Permit reissuance issues taking priority, not acted on. The water quality benchmarks used in the Regional Monitoring Report (Table 4 in each watershed section) may need to be updated. Consider splitting ambient and Stormwater benchmarks into separate tables. Seek Copermittees guidance. March 25, 2008: Copermittees concurred that updating the benchmarks was important. Weston will provide a draft for Copermittees review and comment. <u>Update March 2009- Completed. May want to revisit how nutrients are evaluated.</u> |                |   |
| 18 | Prima<br>ry                         | <u>Per Permit requirements, prepare MS4 Targeted Wet Weather Monitoring Program – Due Sept 1, 2009 to RWQCB</u>  |                | <u>Comments and one MS4 wet weather location per WMA due on</u> |

Regional Monitoring Workgroup Priorities ~~in February 2007; 2008 Update-Draft Update from and Request for C~~ Copermittees Input at Regional Monitoring Workgroup Meeting on March 24~~5~~, 2009~~8~~ ; ~~DRAFT~~ and the results of Copermittees Input.

|           | <b>Pri<br/>ori<br/>ty<br/>Level</b> | <b>Issue</b>  | <b>Comment</b> | <u><b>2009 Action<br/>Items</b></u> |
|-----------|-------------------------------------|---|----------------|-------------------------------------|
|           |                                     |   |                | <u>June 15, 2009;</u>               |
| <u>19</u> | <u>Prima<br/>ry</u>                 | <u>Per Permit requirements,<br/>prepare a Source<br/>Identification Monitoring<br/>Plan for 2009-2010 – Due<br/>Sept 1, 2009 to RWQCB</u> |                |                                     |
|           |                                     |   |                |                                     |

Regional Monitoring Workgroup Meeting - March 24, 2009

| LAST NAME  | FIRST NAME | ORGANIZATION                 | EMAIL                              | PHONE NUMBER              |
|------------|------------|------------------------------|------------------------------------|---------------------------|
| Weber      | Jo Ann     | County of San Diego          | joann.weber@sdcounty.ca.gov        | 858-495-5317              |
| Renfrew    | David      | Weston Solutions             | Dave.renfrew@westonsolutions.com   | 760-795-6903              |
| SONKSEN    | ANDRE      | CITY OF SAN DIEGO            | ASONKSEN@SANDIEGO.CA.GOV           | (858) 591-9317            |
| PADILLA    | MAYELA     | CITY OF ENCINITAS            | mpadilla@cityencinitas.org         | 760 943-2125              |
| Wood       | James      | City of Carlsbad             | james.wood@carlsbadca.org          | 760-602-7584              |
| Helmer     | Chris      | city of Imperial Beach       | chhelmer@cityofib.org              | 619- <del>424</del> -4095 |
| WITHERIDGE | ALISON     | City of Oceanside            | awitheridge@ci.oceanside.ca.us     | 760.435.5822              |
| Morrison   | Roger      | City of Poway                | rmorrison@ci.poway.ca.us           | 858-668-4636              |
| Norris     | Scott      | <del>City</del> County of SD | scott.norris@sdcounty.ca.gov       | 858-640-2482              |
| Hill       | Annie      | Airport Authority            | ahill@saan.org                     | 619 400 2793              |
| Coppi      | Doug       | CITY OF VISTA                | DCOPPI@CITYOFVISTA.COM             | 760 726 1340 XT 1333      |
| Snyder     | Todd       | County of San Diego          | todd.snyder@sdcounty.ca.gov        | 858 694 3482              |
| Human      | KAREN      | Poet                         | khuman@poetofsandiego.org          | 6) 725-6073               |
| Gibbons    | Phil       | Port of SD                   | pgibbons@portofsandiego.org        | 619 725 6037              |
| Higbee     | Jeff       | City of Carlsbad             | jeffrey.higbee@carlsbadca.gov      | 760 602-7586              |
| Anghera    | Shelly     | Weston Solutions             | shelly.anghera@westonsolutions.com | 760-497-3527              |
| Rammstein  | Pauline    | PBS&T representative Del Mar | Pauline.Rammstein@pbsj.com         | 760-603-6067              |
| McKellar   | Shauna     | DMAX Engineering Inc         | <del>smckellar@dmmaxinc.com</del>  | (858) 586-6600 ext 14     |
| PERRY      | HELEN      | CITY OF SANTEE               | hperry@ci.santee.ca.us             | (619) 258-4100/477        |
| Ryan       | Erica      | City of San Marcos           | erican@san-marcos.net              | 760 744 4050              |
| Griffith   | John       | SDCURP                       | john.g@sccurp.org                  | 714 755-3228              |
| Griswold   | Robert     | City of El Cajon             | brgriswold@ci.el-cajon.ca.us       | 619 441 1704              |
| Fontana    | MARISA     | City of Chula Vista          | mfontana@ci.chula-vista.ca.us      | (619) 397-6134            |